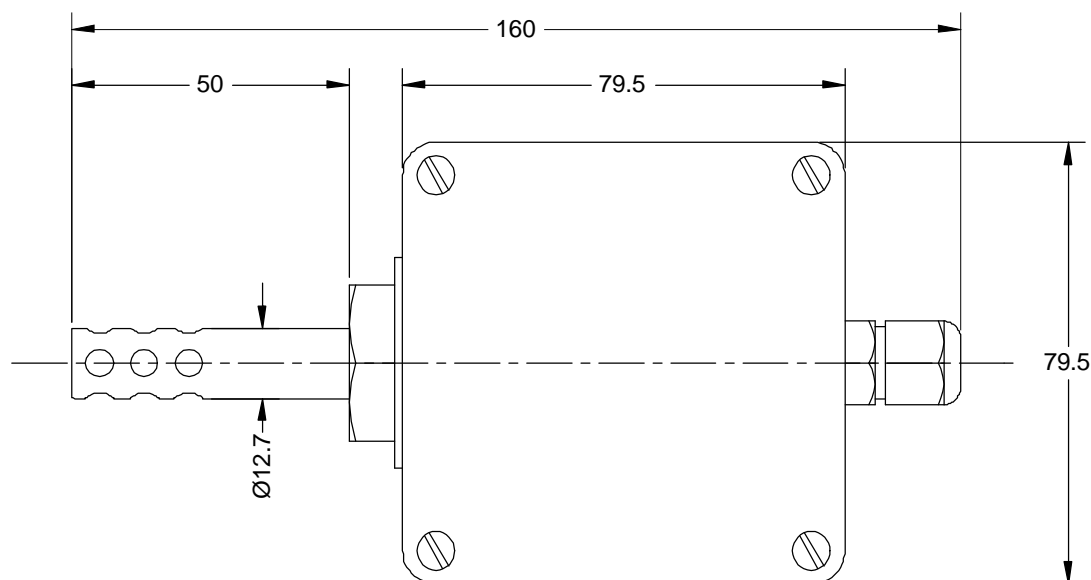
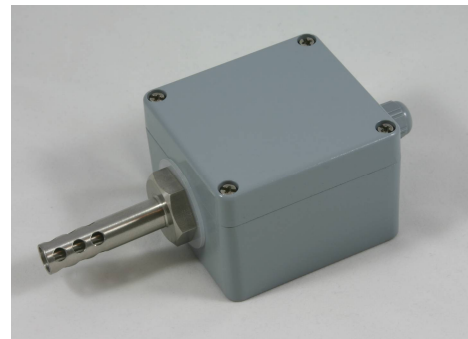


PPL10-P Pt100 Exterior Air Temperature Sensor

Our PPL10 sensor is a rugged sensor suitable for measuring air temperature outdoors or in arduous applications. The sensor has a 316 stainless steel sheath that can be supplied with or without a protective shroud which does not affect sensor performance. The sensor is fitted with a variety of surface mounting terminal housing rated at least IP66 in which we can fit either a terminal block or transmitter. Various common options are shown on this data sheet but this is not an exhaustive list, please contact us with your requirements. Calibration is also available upon request.

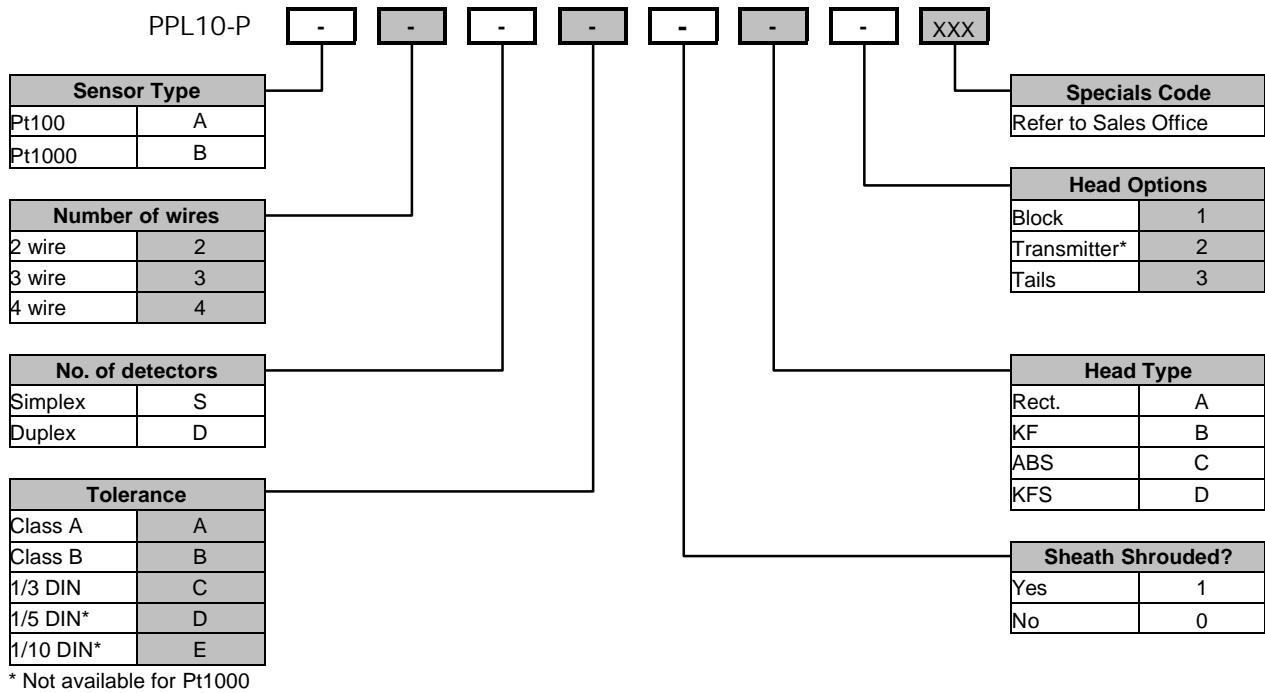


Specifications	
Sensor Type	Platinum Resistance Thermometer—Pt100 or Pt1000
Operating Range	-40 to 85°C
Sheath Material	316 stainless steel
Tolerance Band	Class B, Class A, 1/3 DIN, 1/5 DIN or 1/10 DIN
Wiring System	2, 3 or 4 wire, Simplex or Duplex
Head Types	A - Rectangular Aluminium Alloy, IP66 (as photo) B - KF Aluminium Alloy, IP68 C - ABS, IP67 E - KFS 316 stainless steel, IP68 (Other heads available upon request)
Head Options	A - Ceramic Terminal Block B - In Head Transmitter—SEM203P (Specify Range) C - Tails for Customers Own Transmitter

Full details of all our products can be seen on our web-site:

www.processparameters.co.uk

PPL10-P Pt100 Exterior Air Temperature Sensor



NOTE: Some option combinations not possible

This data sheet gives details of the most popular options available for this type of sensor but is not intended to give an exhaustive list of possibilities. If you have a special requirement, please contact our sales office for assistance.

Process Parameters Ltd

Unit 11C, Waldeck House, Waldeck Road, Maidenhead, Berkshire, SL6 8BR

Tel: 01628 778688

Fax: 01628 777714

Email: sales@processparameters.co.uk

Web: www.processparameters.co.uk